

3 Habitaciones / 2 Baños / Terraza

CUADRO DE SUPERFICIES

SUPERFICIES UTILES

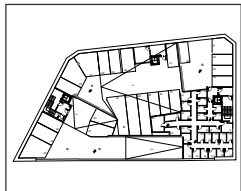
Salón-Cocedor-Cocina	27.44 m ²
Despensa	1.99 m ²
Distribuidor	2.65 m ²
Dormitorio 1	10.80 m ²
Dormitorio 2	6.63 m ²
Dormitorio 3	7.38 m ²
Baño 1	3.76 m ²
Baño 2	3.88 m ²
Terraza	24.91 m ²

Total Superficie Util 89.44 m²

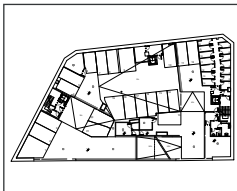
SUPERFICIES CONSTRUIDAS

Sup. Const. Viviendas+Zonas Comunes	111.48 m ²
Sup. Const. Terraza	27.76 m ²

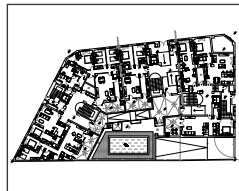
Total Superficie Construida Zonas Comunes+Terraza 139.24 m²



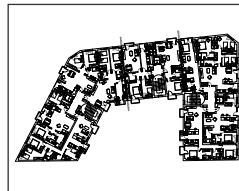
P. SOTANO -2



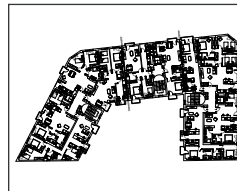
P. SOTANO -1



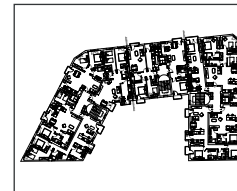
P. BAJA



P. PRIMERA



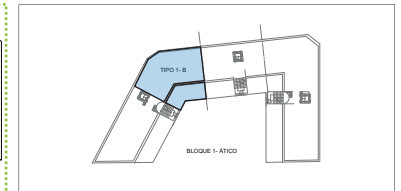
P. SEGUNDA



P. TERCERA



P. ATICO



B1 B
Planta Atico

VIVIENDA ATICO
BLOQUE 1 ATICO B
Calle Pinto, 11
Fuenlabrada (Madrid)

