

3 Habitaciones / 2 Baños / Terraza

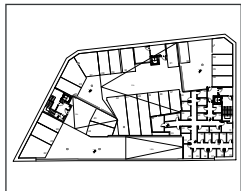
CUADRO DE SUPERFICIES

SUPERFICIES UTILES

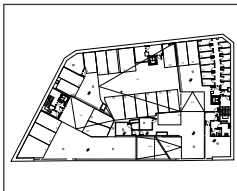
Salón-Cocina-Comedor	39.30 m ²
Dormitorio 1	8.61 m ²
Dormitorio 2	6.38 m ²
Dormitorio 3	7.20 m ²
Baño 1	3.96 m ²
Baño 2	3.68 m ²
Terraza	22.37 m ²
Total Superficie Util	91.50 m²

SUPERFICIES CONSTRUIDAS

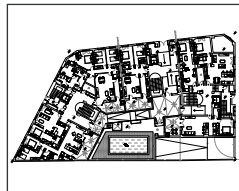
Sup. Const. Viviendas+Zonas Comunes	121.47 m ²
Sup. Const. Terraza	26.27 m ²
Total Superficie Construida Zonas Comunes+Terraza	147.74 m²



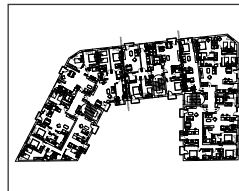
P. SOTANO -2



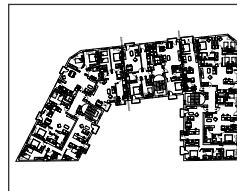
P. SOTANO -1



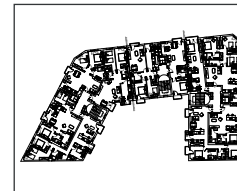
P. BAJA



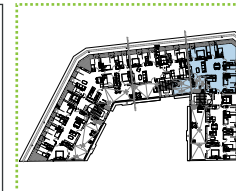
P. PRIMERA



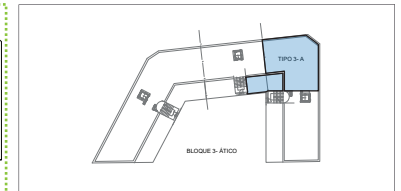
P. SEGUNDA



P. TERCERA



P. ATICO



B3 A
Planta Atico

VIVIENDA ATICO
BLOQUE 3 ATICO A
Calle Pinto, 11
Fuenlabrada (Madrid)

