

3 Habitaciones / 2 Baños

CUADRO DE SUPERFICIES

SUPERFICIES UTILES

Distribuidor	4.86 m ²
Salón-Cocedor-Cocina	35.65 m ²
Dormitorio 1	11.81 m ²
Dormitorio 2	12.83 m ²
Dormitorio 3	10.18 m ²
Baño 1	4.77 m ²
Baño 2	4.45 m ²
Tendedero	2.59 m ²
Balcón	0.69 m ²

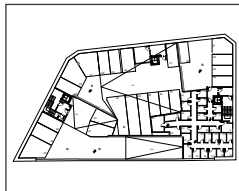
Total Superficie Util 87.83 m²

SUPERFICIES CONSTRUIDAS

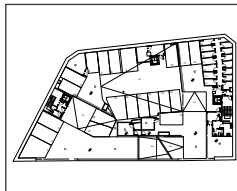
Sup. Const. Viviendas+Zonas Comunes 120.20 m²

Sup. Const. Balcón 0.95 m²

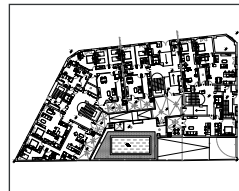
Total Superficie Construida Zonas Comunes+Balcón 121.15 m²



P. SOTANO -2



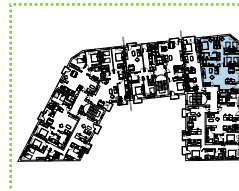
P. SOTANO -1



P. BAJA



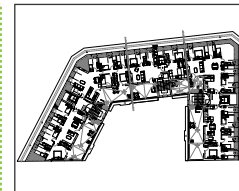
P. PRIMERA



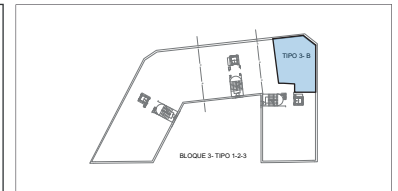
P. SEGUNDA



P. TERCERA



P. ATICO



VT. B3 B
Planta 1ª 2ª 3ª

VIVIENDA TIPO
VT. BLOQUE 3 1-2-3 B
Calle Pinto, 11
Fuenlabrada (Madrid)

