

CUADRO DE SUPERFICIES

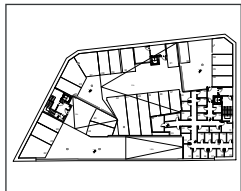
SUPERFICIES UTILES

Salón-Cocina-Comedor	28.25 m ²
Dormitorio 1	11.63 m ²
Dormitorio 2	6.38 m ²
Dormitorio 3	6.33 m ²
Baño 1	3.68 m ²
Baño 2	3.35 m ²
Terraza	36.91 m ²
Total Superficie Util	96.53 m²

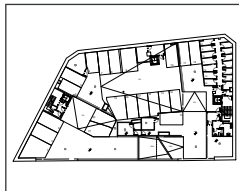
SUPERFICIES CONSTRUIDAS

Sup. Const. Viviendas+Zonas Comunes	102.13 m ²
Sup. Const. Terraza	40.84 m ²
Total Superficie Construida Zonas Comunes+Terraza	142.97 m²

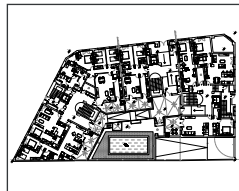
3 Habitaciones / 2 Baños / Terraza



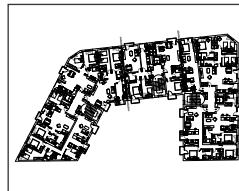
P. SOTANO -2



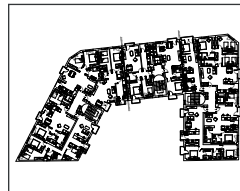
P. SOTANO -1



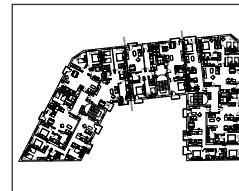
P. BAJA



P. PRIMERA



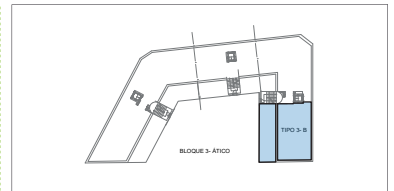
P. SEGUNDA



P. TERCERA



P. ATICO



B3 B
Planta Atico

VIVIENDA ATICO
BLOQUE 3 ATICO B
Calle Pinto, 11
Fuenlabrada (Madrid)

