

CUADRO DE SUPERFICIES

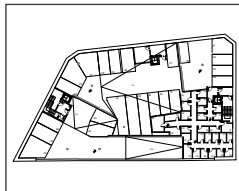
SUPERFICIES UTILES

Distribuidor	6.02 m ²
Salón-Cocina-Comedor	26.34 m ²
Dormitorio 1	9.22 m ²
Dormitorio 2	12.89 m ²
Dormitorio 3	6.80 m ²
Baño 1	3.26 m ²
Baño 2	2.99 m ²
Tendedero	2.14 m ²
Balcón	1.19 m ²
Total Superficie Util	70.85 m²

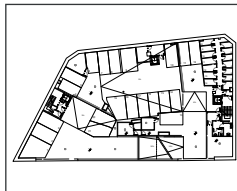
SUPERFICIES CONSTRUIDAS

Sup. Const. Vivienda+Zonas Comunes	98.74 m ²
Sup. Const. Balcón	2.59 m ²
Total Superficie Construida Zonas Comunes+Balcón	101.33 m²

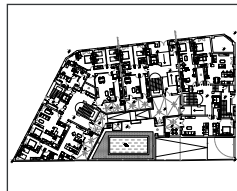
3 Habitaciones / 2 Baños



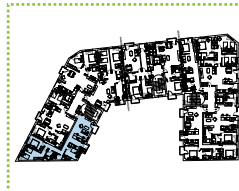
P. SOTANO -2



P. SOTANO -1



P. BAJA



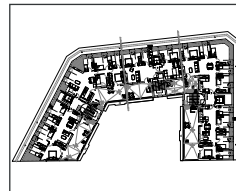
P. PRIMERA



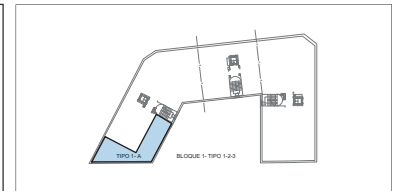
P. SEGUNDA



P. TERCERA



P. ATICO



VT. B1 A
Planta 1ª 2ª 3ª

VIVIENDA TIPO
VT. BLOQUE 1 1-2-3 A
Calle Pinto, 11
Fuenlabrada (Madrid)

